

# Rhyme and Revenue

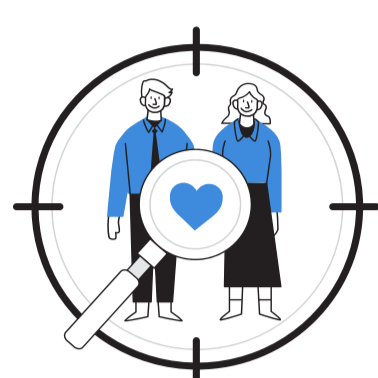
## Elevate Your Poetry Events with Ticket Sales!

Maximize your poetry's impact and earnings by listing events on our platform. Effortless ticket sales, larger audiences await!

[See upcoming event](#)



## Discover the Poetistic Advantage



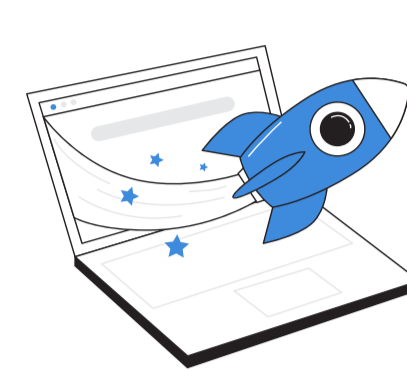
### Targeted Audience

Reach your ideal audience with precision and efficiency, ensuring maximum event impact.



### Flexible Ticket Pricing Options

Customize pricing strategies with options like discounts and tiered tickets



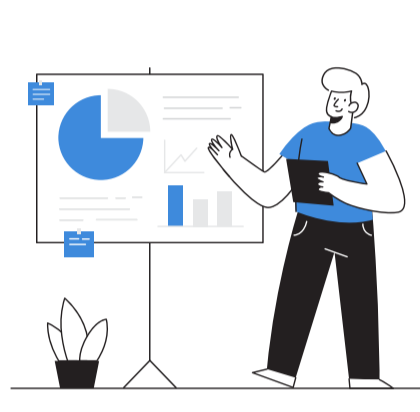
### Marketing And Promotion Support

Expert marketing assistance to target and captivate your ideal audience.



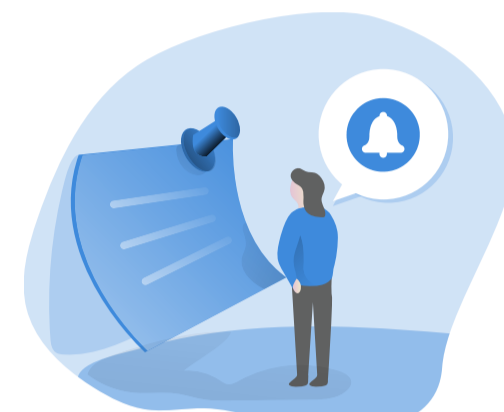
### Quick Settlements

Experience fast, hassle-free financial settlements post-event.



### Performance Analytics & Feedback

Access insightful analytics and audience feedback for continuous improvement.



### Post-Event Engagement

Continue engaging with your audience post-event through follow-up content and updates.

## Partnering for Success

**Commission fee** | 15% of the sale price

We take care of the heavy lifting to make your poetry event a hit. This small investment goes a long way in providing top-notch marketing, streamlined ticketing, and continuous support, ensuring your event not only reaches but also resonates with a wide audience. Think of it as a partnership for your success, where we handle the tickets, so you can focus on your poetry.

## Frequently Asked Questions

### What documents do you need to begin selling tickets on Poetistic?

You will need your PAN Card, Original Trademark Certificate or Authorisation Letter / NOC on the brand owner's letterhead.

### What are the necessary requirements for event listing to start selling tickets with Poetistic?

#### Event Details:

- Provide comprehensive information about the event, including the name, date, time, venue, and a detailed description of what attendees can expect.

#### Ticket Information:

- Specify different types of tickets available, their prices, and any special conditions or packages.

#### Organizer Information:

- Include details about the event organizer, such as your organization's name and contact information.

#### Legal Compliance:

- Ensure all necessary legal permissions and licenses for the event are in place and adhere to local regulations.

#### Payment and Refund policies:

- Outline clear payment procedures and refund policies for ticket buyers.

### How long does the process of onboarding events with Poetistic typically take?

To be onboarded on Poetistic, your brand meets Poetistic's specific selection criteria, the onboarding process can be completed in just 2 business days.

### What is Poetistic's payment timeline?

Poetistic offers a 15-day payment settlement period that begins from the date of your event.

### How do you receive updates on ticket sales?

Whenever a new ticket is sold for any of your events, Poetistic will inform you through email and SMS notifications.

### How are tickets delivered to customers?

You have the option to generate a customized ticket for each customer who purchases tickets for your event. Tickets will be attached in the email to the customer post-purchase.